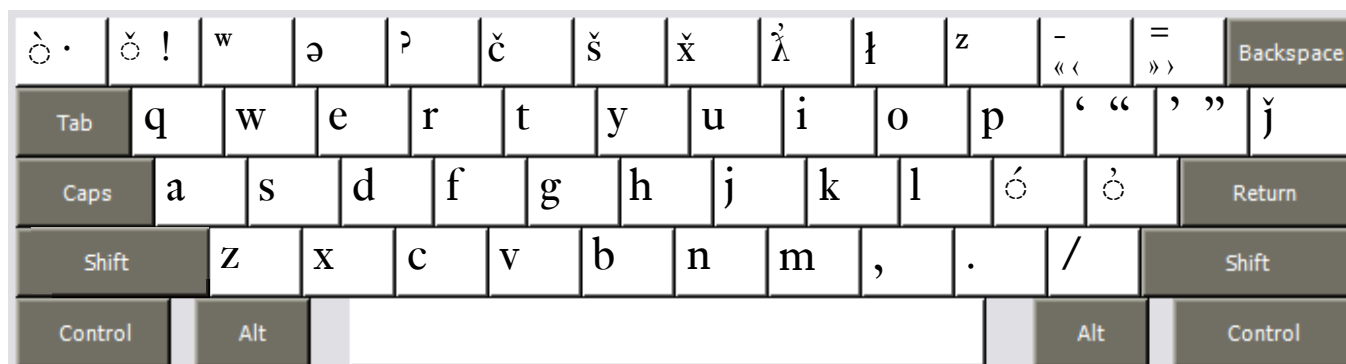


Dəx^wləšucid (Number Keys) Keyboard



Copyright 2007 Chris Harvey

Notes

- The special characters of Dəx^wləšucid have been assigned to the number keys. To type the numerals, hold down the Right-Alt or Option key then press the appropriate number key. The Numeric keypad on the right side of many keyboards keep its original numbers.
- All accents are typed after the base character: *ǰ* is typed **t** then **Apostrophe** '.
- To type the glottalized accent ' use the **Apostrophe key** '. *k* is typed **k** then **Apostrophe** '.
- To type the acute accent ´ use the **Semicolon key** ;. *á* is typed **a** then **Semicolon** ;.
- To type the grave accent ` use the **Grave key** `. *à* is typed **a** then **Grave** `.
- To type the háček accent ˇ use the **One key** 1. *č* is typed **c** then **1**. The letters *č*, *š*, *ǰ*, *ĺ* also have been assigned their own keys.
- There is no need to type the apostrophe accent after *ĺ*, it is included in the keystroke.
- All changed punctuation can type their original value by holding down the **Right-Alt** or **Option key**. The **Left-Bracket** [is typed **Right-Alt+Left-Bracket** (Windows) **Option+Left-Bracket** (Mac).
- Opening and closing quotes. For Mac users, Right-Alt is either of the Option Keys.
 - single: ‘ Left-Bracket — ’ Right-Bracket
 - double: “ Shift+Left-Bracket — ” Shift+Right-Bracket
 - single < Right-Alt+Shift+Hyphen — > Right-Alt+Shift+Equals
 - double « Right-Alt+Hyphen — » Right-Alt+Equals

Dəx^wləšucid (Punctuation Keys) Keyboard

ó ò	1 !	2 @	3 #	4 \$	5 %	6 ^	7 ‘	8 ’	9 («	0) »	w	ö ·	Backspace
Tab	q	w	e	r	t	y	u	i	o	p	ł	ł̇	z
Caps	a	s	d	f	g	h	j	k	l	ə	ó	Return	
Shift	z	x	c	v	b	n	m	,	.	ʔ ʔ	Shift		
Control	Alt									Alt	Control		

Copyright 2007 Chris Harvey

Notes

- All accents are typed after the base character: *ṫ* is typed **t** then **Apostrophe '** .
- To type the glottalized accent ʔ use the **Apostrophe key '** . *k̇* is typed **k** then **Apostrophe '** .
- To type the acute accent ˘ use the **Grave key `** . *a˘* is typed **a** then **Grave `** .
- To type the grave accent ̀ use the **Shift+Grave key** . *à* is typed **a** then **Shift+Grave `** .
- To type the háček accent ˇ use the **Equals key =** . *č* is typed **c** then **Equals =** .
- There is no need to type the apostrophe accent after *ł̇*, it is included in the keystroke.
- All changed punctuation can type their original value by holding down the **Right-Alt** or **Option key**. The **Left-Bracket [** is typed **Right-Alt+Left-Bracket** (Windows) **Option+Left-Bracket** (Mac).